

Microbiome dysbiosis

You learn/work with:

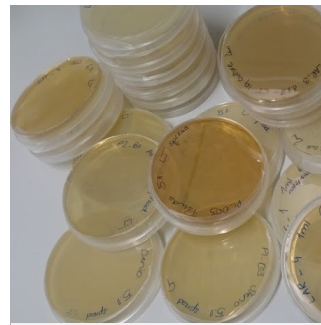
Observation: A synthetic community of 9 bacteria (SynCom 9) promotes growth in open pots (low humidity). The same SynCom 9 provokes a phenotype of 'water soaked leaves' in closed microcosms and humid conditions.



Microcosms



A. thaliana



Microbiology

	control	SynCom 9
Open dry		
Closed humid		



You investigate what underlies microbiome dysbiosis and why that causes such drastic phenotype switches.